

mod.CPR-M3

Getto singolo
quadrante bagnato
Single jet wet dial



Disponibile versione
acqua calda 30-90°C
Available version
for hot water 30-90°C

Mod. CPR-M3

Getto singolo, quadrante bagnato, lettura diretta. Dotato di anello anti-frode con coperchio orientabile a 360°. Realizzato nelle versioni per acqua fredda (30°C) e acqua calda (90°C) nei calibri \varnothing 15 e 20 mm (1/2"-3/4"). Garanzia di lunga durata.

Mod. CPR-M3

Single jet, wet dial, direct reading with anti-fraud ring with 360° rotating lid. Produced in the versions for cold water (30°C) and hot water (90°C) in the diameters 15 and 20 mm (1/2"- 3/4"). Long durability guaranteed.

Mod. CPR-M3

Chorro único, esfera húmeda, lectura directa. Equipado de anillo antifraude con tapa orientable a 360°. Producido en las versiones para agua fría (30°C) y caliente (90°C) en los calibres \varnothing 15 y 20 mm (1/2"- 3/4"). Garantía de larga duración.

Mod. CPR-M3

Einzelwasserstrahl, nasses Ziffernblatt, Direktablesung. Ausgestattet mit anti-Betrug Ring mit richtbarem Deckel 360°. Produziert in den Versionen Kaltwasser (30°C) Warmwasser (90°C) in den Durchmessern 15 und 20 mm (1/2 Zoll- 3/4 Zoll). Garantiert lange Haltbarkeit.

Mod. CPR-M3

Jet unique, cadran noyé à lecture directe. Equipé d'une bague d'inviolabilité avec couvercle orientable à 360°. Disponible en la version pour eau froide (30°C) ou eau chaude (90°C) en 2 calibres 15 ou 20 mm (1/2" ou 3/4"), fiabilité dans le temps.

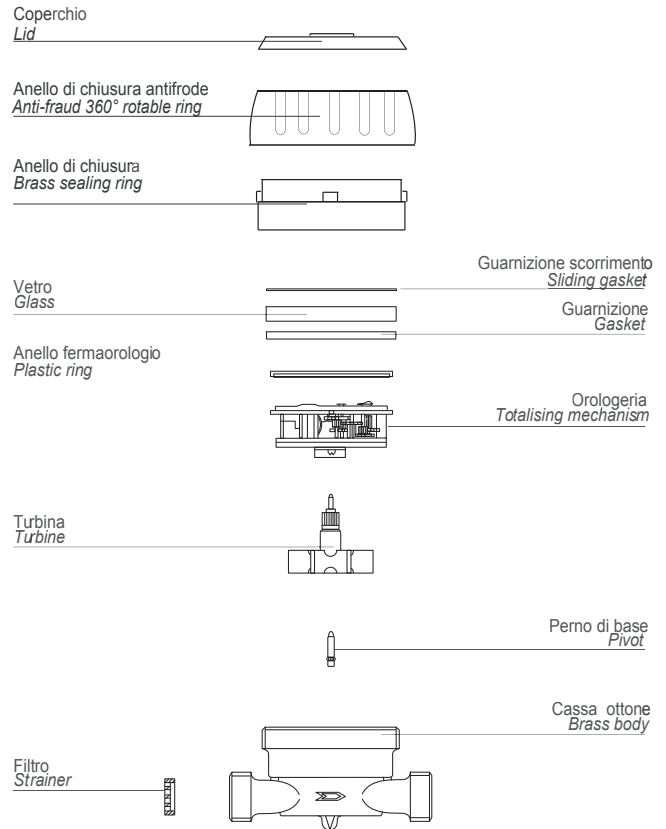
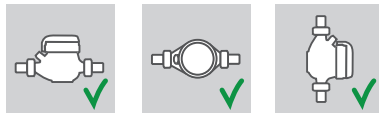
Мод. CPR-M3

Одноструйный счетчик с мокрым квадрантом и прямым считыванием, антимагнитным кольцом и вращающейся на 360° крышкой. Выпускается в версиях для холодной (30°C) и горячей (90°C) воды диаметрами условного прохода 15 и 20 мм (1/2" – 3/4"). Гарантия долговечности.

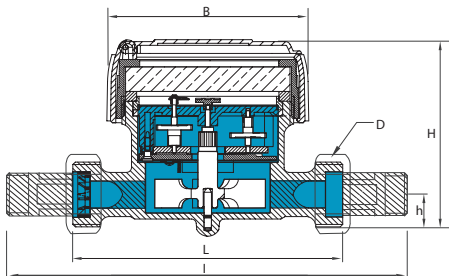
Caratteristiche tecniche - Technical features

Calibro Size	DN	mm in	15 (1/2")	20 (3/4")
Portata di sovraccarico Overload flow rate	Q ₄	m ³ /h	3.12	5
	Q ₃	m ³ /h	2,5	4
R = 100H	Portata di transizione Transitional flow rate	l/h	40	64
	Portata minima Min flow rate	l/h	25	40
R = 160H	Portata di transizione Transitional flow rate	l/h	25	40
	Portata minima Min flow rate	l/h	15,63	25
Lettura minima Min reading		l	0,05	
	Lettura massima Max reading	m ³	99.999	
	Pressione max ammissibile Max admissible pressure MAP	bar	16	

Posizione d'installazione Installation position



Dimensioni e pesi - Dimensions and Weights



Calibro Size	mm in	15 (1/2")	20 (3/4")	
L	mm	110	130	
l	mm	190	228	
H	mm	80	80	
h	mm	18	18	
B	mm	80	80	
D <small>Filettatura Threading</small>	in	3/4"	1"	
Pesi Weight	con raccordi with unions	kg	0,76	0,93
	senza raccordi without unions	kg	0,62	0,69

Filettatura - Threading EN ISO 228-1:2000

Versione base - Basic version

- MID R100-H/V 2004/22/CE
- Disponibile in versione per acqua fredda 0°C-30°C e per acqua calda 30°C-90°C
- Trasmissione meccanica
- Lettura diretta su 5 rulli numeratori
- Quadrante bagnato
- Coperchio girevole
- MID R100-H/V 2004/22/CE
- Available for cold water 0°C-30°C and for hot water 30°C-90°C
- Mechanical transmission
- Direct reading on 5 numeric
- Wet dial
- Rotating lid

Su richiesta - Upon request

- Versioni MID R160-H/R100-V, MID R200-H/R100-V, MID R250-H/R125-V
- Version MID R160-H/R100-V, MID R200-H/R100-V, MID R250-H/R125-V